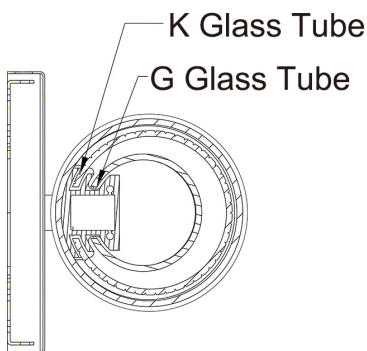
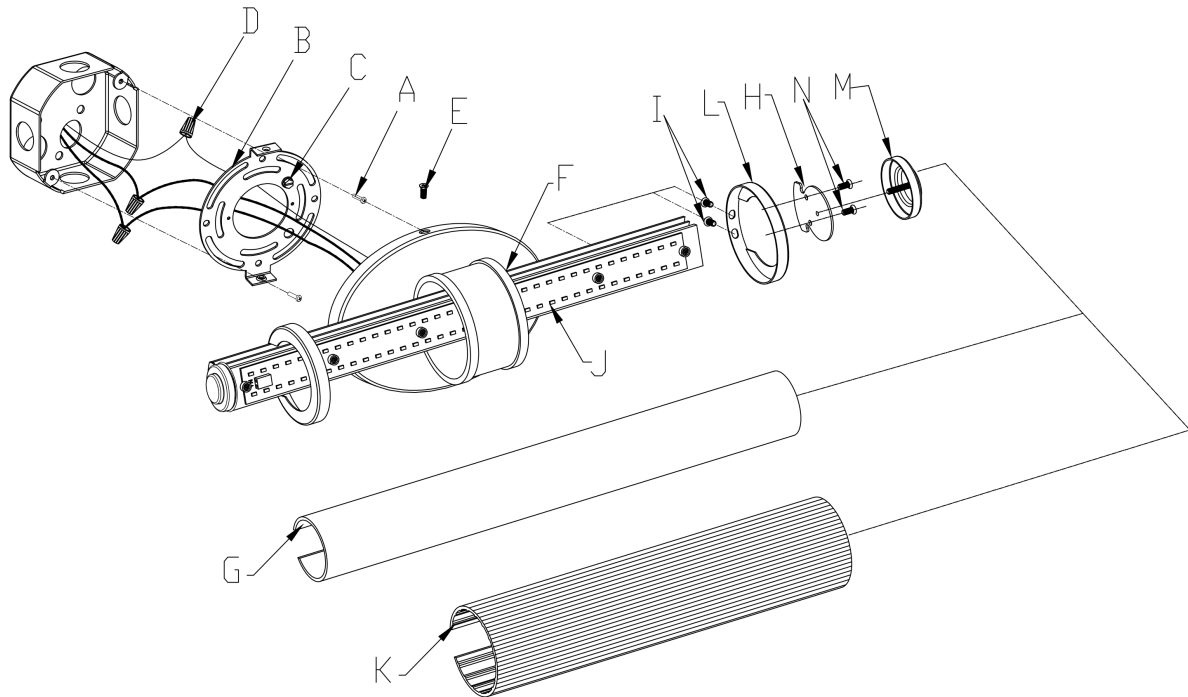




ASSEMBLY INSTRUCTIONS

ITEM NO.: 8-1959-25-158/ 8-1959-35-158/
8-1959-53-158/ 8-1959-25-11/
8-1959-35-11/ 8-1959-53-11



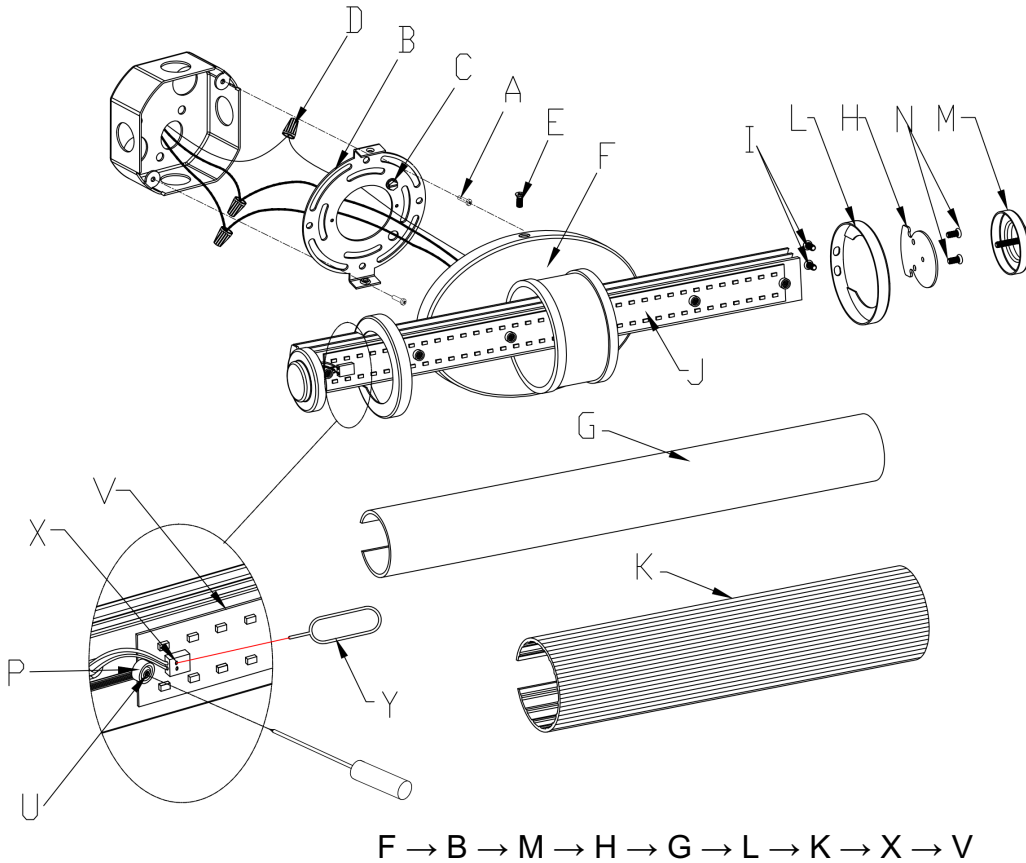
Side View Fig

G → K → L → H → M

1. Carefully unpack and identify all parts referring to illustration for parts identification.
2. Turn the power to the installation point OFF.
3. Referring to the installation instruction with the product for the wiring and installation.
4. Insert the inner glass tube(G) and outer glass tube(K) to the extrusion lamp body(J).
5. Install the endcaps(L) on the extrusion lamp body(J), securing with screw(I).
6. Install the endcap plates(H) on the end of the extrusion lamp body(J), securing with screw(N).
7. Install the endcaps(M) on the endcap plates(H), securing with screw.
8. Restore the power to the installation point ON.
9. Assembly is completely. Retain this sheet for future reference.

WARNING: The glass must be slid into the extrusion with caution, any deviation will cause damage to the glass.

Replacing LED module (Fig. 2)



1. Turn the power to the installation point OFF.
2. Remove screws(E), hold the lamp body and remove the screws(A).
3. Remove the wire nuts (D), and take the fixture down from the wall.
4. Remove the endcaps(M), and remove the screws(N), take the endcap(H) and Glass(G) out from the lamp body.
5. Remove the screws(I), and take the endcap(L) and Glass(K) out from the lamp body.
6. Use the kit(Y) to press the wire connector(X) to take the cables out from the connector.
7. Remove the screws(U) and washers(K). And take the LED module out.
8. Reverse steps 7-1 for installing the new LED module.

WARNING: The glass must be slid into the extrusion with caution, any deviation will cause damage to the glass.